

## PERMA-SHIELD® GLIDING PATIO DOORS WITH BUILT-IN BLINDS



The 200 Series Perma-Shield® Gliding patio door, one of Andersen's most time-tested designs, is now available with the modern convenience of blinds between the glass.

### CONVENIENT

- Blinds are located between the panes of insulated glass, protected from dust and damage
- Glass is easy to clean without the need to move the blinds
- Cordless design to easily raise, lower or tilt blinds for control of light and privacy



### DURABLE

- Virtually maintenance-free
- Perma-Shield exterior and interior never need painting and won't peel, blister, flake or corrode\*
- Frame exterior is protected by a tough vinyl cover that resists dents, repels water and provides long-lasting protection
- Laminated veneer lumber panels provide excellent structural stability, longevity and energy-efficiency
- The sill is made of aluminum with a stainless steel capped roller track to resist stain, rust and denting.\*

### ENERGY EFFICIENT

- Weather-resistant construction for greater comfort and energy efficiency
- Weatherstripping is designed to seal out drafts, wind and water
- Low-E tempered glass to help with heating and cooling costs

### BEAUTIFUL

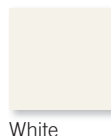
- Slim profiles maximize your view
- Durable, low-maintenance vinyl interior matches the exterior color
- Extensive hardware selection
- Exterior trim options for added style



# 200 SERIES PERMA-SHIELD® GLIDING PATIO DOOR WITH BUILT-IN BLINDS

## COLOR

- White interior & exterior with aluminum white slat blinds



## GLASS

- Low-E tempered glass

## SIZE

- **PS510** (unit dimension: 70-1/2" X 79-1/2")
- **PS5** (unit dimension: 59-1/4" X 79-1/2")
- **PS3** (unit dimension: 38-3/8" X 82-3/8") Stationary unit that can be used individually or as a sidelight with the PS6 unit.
- **PS6** (unit dimension: 72" X 82-3/8")

## ADDITIONAL FEATURES

- Reach-out lock seals the panel tight against the frame
- A thermal barrier in the sill reduces heat loss and limits condensation on the inside
- Dual ball-bearing rollers on door panels provide smooth gliding operation

## EXTERIOR TRIM STYLES & COLORS



2" Brick Mould, Canvas



3 1/2" or 4 1/2" Flat, Terratone



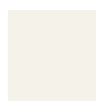
Decorative Drip Cap with 3 1/2" or 4 1/2" Flat, Forest Green



3 5/8" Cornice Head with 3 1/2" or 4 1/2" Flat, White



2" Cornice Head with 3 1/2" or 4 1/2" Flat, Prairie Grass



White



Canvas



Sandtone



Terratone



Dark Bronze



Cocoa Bean



Red Rock



Prairie Grass



Forest Green



Dove Gray



Black

## HARDWARE STYLES

### YUMA®



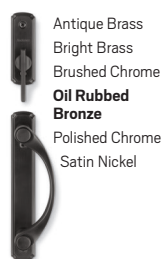
### ENCINO®



### ANVERS®



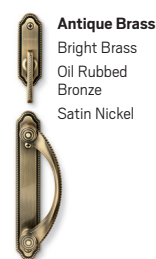
### NEWBURY®



### COVINGTON™



### WHITMORE®



### ALBANY



### TRIBECA®



## HARDWARE FINISHES



Antique Brass



Black



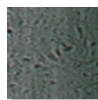
Bright Brass



Brushed Chrome



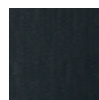
Distressed Bronze



Distressed Nickel



Gold Dust



Oil Rubbed Bronze



Polished Chrome



Satin Nickel



Stone



White

Distressed bronze and oil rubbed bronze are "living" finishes that will change with time and use.

Printing limitations prevent exact color and finish duplication.

"Andersen" and all other marks where denoted are trademarks of Andersen Corporation.

©2017 Andersen Corporation. All rights reserved. MS1708-1079