



# ADVANCED WINDOW CORPORATION

6300 SERIES  
WINDOWS  
& DOORS

Exclusively by



**ARDMOR**<sup>TM</sup>  
WINDOWS & DOORS

See the world in a better light...

[www.ardmor.com](http://www.ardmor.com)

# VINYL WINDOW REPLACEMENT

Because the material benefits of vinyl include cost efficiency, durability and the inability to rot, vinyl windows have become the go-to option for most used replacements. **In fact, 90% of window replacements today include vinyl.** However, it's important to remember that it takes more than the material itself to restore window efficiency—proper installation is key. At ARDMOR Windows & Doors, we offer comprehensive services, assessing the most suitable vinyl window replacement for the job, securing the most competitive warranty, and completing installation with the help of expert technicians.

## ADVANCED WINDOW

Offering quality services since 1995, Advanced Window Corp. is a highly accomplished manufacturer and wholesaler of vinyl windows and doors. Rapid production, high quality standards and a superior commitment to excellent customer service has allowed Advanced Window to experience incredible growth and development in recent years. Having established a professional collaboration over several years, ARDMOR Windows & Doors is proud to participate in a continued partnership with Advanced Window.

### Why choose Advanced Window?

- Offers one of the top warranties on the market
- Highest quality materials used in window production
- Made in the USA
- Energy Star Partner
- Direct partners with ARDMOR Windows & Doors, allowing low prices.

### Why choose ARDMOR for window and door projects?

- We travel to your home to conduct an on-site inspection of windows and doors to assess the exact needs for successful resolution.
- Repair is our priority. We only recommend total replacement when absolutely necessary.
- We consider your unique needs to help select the best window for your home and budget.
- Our technicians are experts in the field and perform quality work. Check our reviews!
- We identify and correct all issues affecting the window before installation (rotting wood, warping, etc.)
- Windows are custom-made and fitted to match your specific dimensions seamlessly.
- Foam insulation is carefully applied during installation to create a seamless fit between the window and opening.
- We offer a wide selection of window finishing options to suit your needs. Exterior wood can be wrapped in aluminum or replaced by PVC for durability.



*Advanced Window Corp.*

Beautiful windows made strong and durable, because form follows function.

Add style and value to your home  
Cut energy costs  
Drastically reduce upkeep



6300 Series Overview .....	4
Double Hung .....	5
Slider .....	6
Picture .....	7
Casement and Awning .....	8
Sliding Patio Door, Patio Door Fixed Units .....	9
Bay and Bow .....	10
Architectural Shapes .....	11
6300 Standard Features .....	11



# 6300 SERIES



The engineering team has created a window and door series that connects beauty with top efficiency, strength and durability. Innovative, state of the art design tools and rigorous testing programs were the essence of this window and door series.

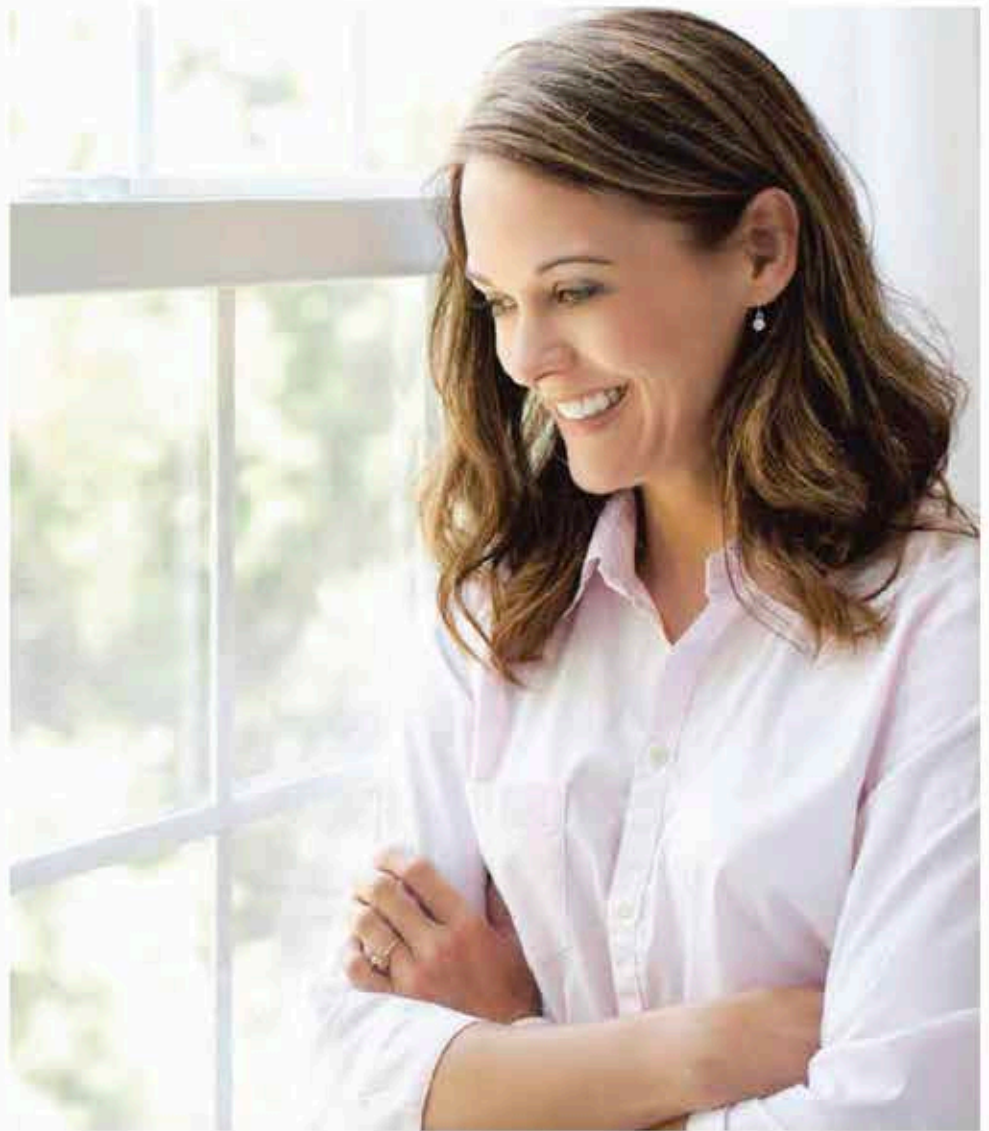
All of the 6300 Series products are NFRC (National Fenestration Rating Council) rated. Every window and door passed aggressive structural tests under AAMA (American Architectural Manufacturers Association) rules.

The 6300 Series is specially engineered for superior energy efficiency, going beyond current Energy Star requirements, so that you can experience greater comfort in your home.

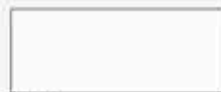
With the 6300 Series, you will feel the difference, and enjoy the lower energy bills.

Perfectly suitable for renovation or new construction, the colonial style of the design offers an elegant appearance, enhances the luxurious feel and supplements the highest design trends.

Products are available in a variety of color options. From solid white or tan, laminated with wood patterned films, to unlimited color options with factory applied "Art-Wood" Eco-friendly water based paint. The profiles are made of 100% recyclable virgin vinyl material, designed to withstand



## 6300 Series Standard Color Options\*



White



Almond



Bronze



Black

### The 6300 Series consist of:

Double-Hung or Oriel Windows

Fixed Windows

2 or 3 lite Slider Windows

Casement and Awning Windows

Casement Large and Small  
Frame Fixed Windows

Sliding Patio Doors with  
Available Transom and Side Lite

Architectural Shapes

Bay and Bow Windows

the harshest weather conditions without any extra care. The large number of internal walls inside of each frame and sash profile enhances thermal, structural and acoustical performances; following with stronger, fully welded joints. A specifically located larger chamber allows for the use of galvanized steel reinforcements, without creating cold bridges. The reinforcements increase the profile rigidity, allowing for a more strict structural performance.

The 3-1/4" window frame profile features a mullion groove design, allowing for easy frame to frame connections, and for the use of various accessory profiles needed for specific installation types.

All of the 6300 products are available with a huge selection of optimized glazing options low-E's and gas fill types, warm edge spacer systems like UltraSpacer and SuperSpacer, Neat coating on external glass surface for easier maintenance, decorative grids and internal blinds if size permits.

Specifically designed and engineered mulling allows for structurally needed multi-window connections.

6300 series products are custom made to ensure the product is a perfect fit for all of the client's needs. They are elegant, economical, and easy to install; making it an easy choice for any project.

\*Advanced Window reserves the right to change the color availability.





## DOUBLE HUNG

### 6300 Double-Hung Window offers the following features:

- 3-1/4" frame depth with mullion grooves
- Full sloped sill
- Meeting rail profiles with integrated interlock system, reducing air infiltration and increasing security
- High density internal wall design to increase thermal, structural, and acoustical performances
- Excellent strength of fully welded joint connection of frame and sash
- Both top and bottom sashes operable
- Tilt-in option for easy cleaning
- Night latches for secure venting

- Zinc die casted com locks and keepers
- Double or triple optimized insulated glass units (double glazed u-value as low as 0.23, triple glazed u-value as low as 0.19)
- Optional galvanized steel reinforcements for both of the sash meeting rails, vertical stiles and Frame-Sill profile encapsulated with insulating internal chambers
- Externally glazed to reduce air or water leakage
- Triple gasket system to seal sash members and frame against each other
- Extruded aluminum frame half screen with fiberglass mesh
- Custom sizes

### 6300 Double-Hung Window offers the following options:

- Solid white or tan colors
- Unlimited external color options painted with Eco-friendly water based paints
- Internal surfaces laminated with woodgrain patterned films available
- Multiple Low-E and gas fill options
- Decorative internal grid systems
- Oriel windows with custom split
- Accessory profiles like: couplers, brick moldings & nail fin
- Full screen, aluminum or pet resistant mesh
- Various hardware options

**"BEAUTY, STYLE AND PERFORMANCE ALL TOGETHER"**





## SLIDER WINDOW

### 6300 Slider Window offers the standard features:

- 3-1/4" frame depth with mullion grooves
- Meeting rail profiles with integrated interlock system reducing air infiltration and increasing security
- High density internal wall design to increase thermal, structural and acoustical performances
- Excellent strength of fully welded joint connection of frame and sash
- Lift option for sash removal
- Both sashes operable
- Anti-lift insert for increased security

- Night latches for secure venting
- Zinc die casted cam locks and keepers
- Double rollers for easy sash movements
- Double or triple optimized insulated glass units (double glazed u-value as low as 0.23, triple glazed u-value as low as 0.20)
- Optional galvanized steel reinforcements for both of the sash meeting rails encapsulated with insulating internal chambers
- Externally glazed to reduce air or water leakage

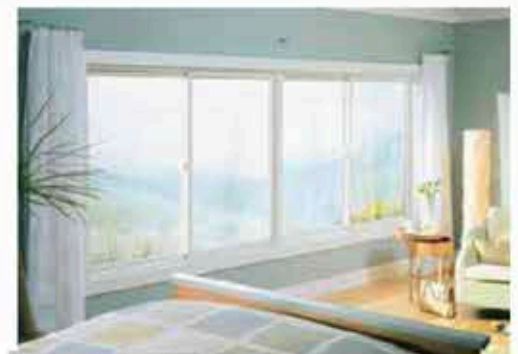
### 6300 Slider Window can be enhanced with the following options:

- Solid white or tan colors
- Unlimited external color options painted with Eco-friendly water based paints
- Multiple Low-E and gas fill options
- Decorative internal grid systems
- Accessory profiles like: couplers, brick moldings & nail fin
- Full screen, aluminum or pet resistant mesh
- Various hardware options

### "THE PERFECT PRODUCT FOR LARGER WINDOW OPENINGS"

6300 Slider window is offered with 2 or 3 sashes, depending on window width and height. Its oversized frame and sash profiles with optional galvanized steel reinforcements allow larger openings to be glazed without sacrificing the thermal performance. Often enough, it is a more economical way to enhance the home. The 6300 Slider windows with specific glazing options meet or exceed newest Energy Star ratings.

- Extruded aluminum frame half screen with fiberglass mesh
- Custom sizes





# PICTURE WINDOWS

**6300 Picture Windows products include:**

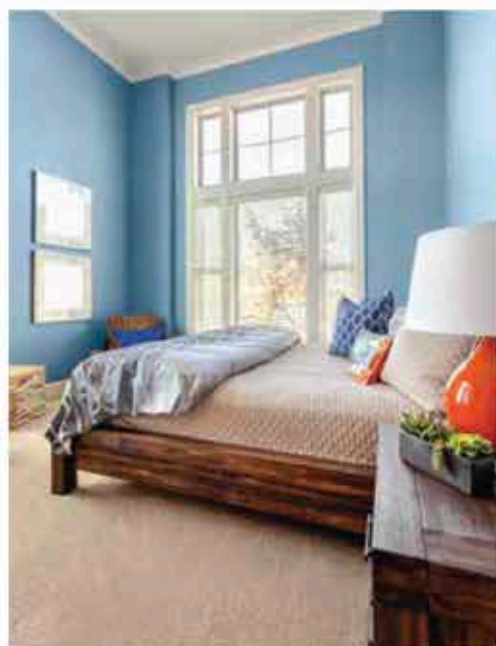
- **Standard Fixed Window**
- **Casement Large and Small Frame Fixed Windows**

**6300 Picture Windows offers the following features:**

- 3-1/4" frame depth with mullion grooves
- High density internal wall design to increase thermal, structural, and acoustical performances
- Excellent strength of fully welded joint connection of frame
- Direct inside glazing for easy access and increased security
- Double or triple optimized insulated glass units (double glazed u-value as low as 0.22, triple glazed u-value as low as 0.15)
- Custom sizes

**6300 Picture Windows are available with these options:**

- Solid white or tan colors
- Unlimited external color options painted with Eco-friendly water based paints
- Internal surfaces laminated with woodgrain patterned films available
- Assortment of internal "Art-Wood" finishes
- Multiple Low-E and gas fill options
- Decorative internal or external grid systems
- Accessory profiles like: couplers, brick moldings & nail fin



**"ACCENT WINDOWS TO ENJOY THE UNOBSTRUCTED VIEW"**

The 6300 Picture window is the perfect match for the 6300 Double Hung or Slider windows. 6300 Picture Large Frame windows enhance the 6300 Casement and Awning windows. All 6300 Picture windows exceed Energy Star standards.



# CASEMENT & AWNING WINDOWS

## 6300 Casement and Awning Window include the following features:

- 3-1/4" frame depth with mullion grooves
- High density internal wall design to increase thermal, structural and acoustical performances
- Excellent strength of fully welded joint connection of frame and sash
- 2 rows of continuous rubber compression seals with an additional pile weather seal
- Optional galvanized steel reinforcements for the sash rails encapsulated with insulating internal chambers
- Double or triple optimized insulated glass units (double glazed u-value as low as 0.22, triple glazed u-value as low as 0.16)

- Internally glazed for easy access and increased security
- Roto's Fold-Away Handle
- Roto's Pro-Drive Multi-Point Locking Hardware System with compression adjustability
- Roto's Pro-Drive concealed heavy duty hinges
- Roto's X-Drive operators
- Extruded aluminum screen frame with low visible fiberglass mesh
- Custom sizes

Casement and Awning windows can give you the look you want with the ventilation options you need. Cleaning the outside is easy! Our Casement windows include a "wash-ability" hinge designed to completely offset the window and frame when fully open. In connection with the 6300 Fixed Large Frame window, they offer multi glazing options. 6300 Casement and Awning windows outperform the newest Energy Star ratings.

## 6300 Casement and Awning Window include the following options:

- Solid white or tan colors
- Unlimited external color options painted with Eco-friendly water based paints
- Internal surfaces laminated with woodgrain patterned films
- Assortment of internal "Art-Wood" finishes
- Multiple Low-E and gas fill options
- Decorative internal or external grid systems
- Accessory profiles like: couplers, brick moldings & nail fin
- Egress hinges for wider opening in casement windows
- Aluminum or pet resistant screen mesh
- Various hardware finish options

**"BEAUTIFUL  
COLONIAL STYLE  
DESIGN WITHIN  
YOUR REACH"**





# SLIDING PATIO DOOR, PATIO DOOR FIXED UNITS

## 6300 Series Sliding Patio Door include the following features:

- 4-7/8" frame depth with mullion grooves and integrated nailing fin for optional new construction installation
- 3 standard 2 panel doors width sizes: 5', 6' and 8'; all with 6'-8" height
- Custom sizes available
- Single sash operable, left or right handed
- High density internal wall design to increase thermal, structural, and acoustical performances
- Meeting rail profiles with integrated interlock system, reducing air infiltration
- Excellent strength of fully welded joint connection of frame and sash
- Equal lite
- Lift option for sash removal
- Anti-lift insert for increased security
- Anodized aluminum threshold with Q-LON gasket
- Anodized screen track
- Stainless steel sash roller track
- Double tandem concealed steel rollers, adjustable, with steel bearing
- 2-point mortise lock with narrow line
- Intuition Handle with semi-automatic closure and opening function
- Keyed outside metal pull handle, powder coated
- Secondary, 2 position Foot Lock for increased security and controlled ventilation
- Lockable extruded aluminum screen for durability with fiberglass screen mesh
- Internally glazed for increased security, double or triple glass options (on door: double glazed u-value as low as 0.23, triple glazed u-value as low as 0.18, on fixed unit: double glazed



- u-value as low as 0.22, triple glazed u-value as low as 0.16)
- Galvanized steel reinforcements for both, sash and fixed mullion encapsulated with insulating interior chambers

## 6300 Series Sliding Patio Door can be enhanced with the following options and features:

- Solid white or tan colors
- Unlimited external color options painted with Eco-friendly water based paints
- Assortment of internal "Art-Wood" finishes
- Powder coated color choices and metallic finishes for handle options
- 4-point locking mortise lock
- Multiple Low-E and gas fill options
- Decorative internal or external grid systems
- Accessory profiles like: couplers, brick moldings & nail fin
- Aluminum or pet resistant mesh

**"ENHANCED LOOK AND BRIGHTER SPACE IN YOUR HOME"**

The 6300 Series Sliding Patio Door is a great addition to any room. They provide large amounts of natural light, especially in areas with limited space. With the most modernly engineered design, our doors are weather resistant, strong, durable and secure. They are able to enhance the look of any estate with its functional and elegant look. When choosing our meticulously designed doors for your home, you'll feel confident in your choice, knowing that they will last you a lifetime. 6300 Sliding Patio Door units exceed the newest Energy Star ratings. The mullings of door combinations with side panels or transom are reinforced with structural steel allowing for the glazing of large openings.





# BAY & BOW WINDOWS

6300 Bay and Bow windows are constructed with a choice of 6300 series products like Double Hung, Casement or Picture windows. The windows are carefully assembled together with externally graded 1-1/4" engineered plywood as jambs, head and seat boards. The external accessory profiles allow for multiple angle connections, optional seat board insulation and protection of the wooden edges from the environmental elements. Choose the combination that will deliver exactly what your application requires.

## "SHARING BEAUTIFUL VIEWS..."

### All Bay & Bow Windows have these features:

- Head, Jamb and Seat Boards constructed with 1-1/4" externally

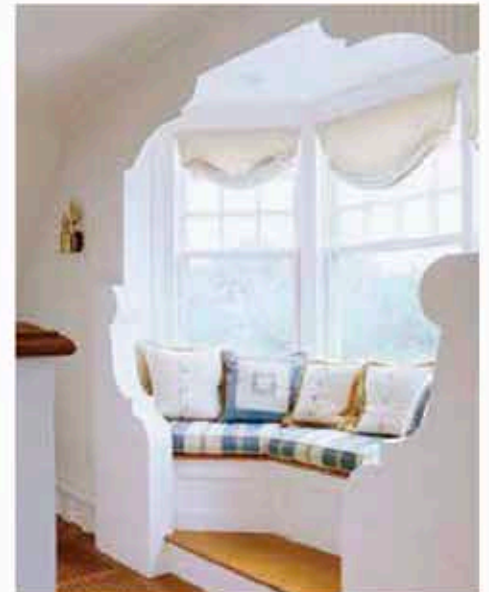


graded engineered plywood coated with PVC film to protect plywood from outside moisture penetration

- Zinc plated heavy duty brace and rod or cable supporting system increasing unit rigidity and allowing for easy unit hanging and/or bottom supporting
- Color matching external finishing profiles
- Color matching internal finishing trims
- Custom sizes
- Real wood internal veneer on plywood elements for natural feel and beauty

### All Bay & Bow Windows include the following options:

- 3-6 window sections up to 12' wide
- Solid white or tan colors
- Untreated Natural Oak or Birch veneer as internal plywood finish
- Unlimited external color options painted with Eco-friendly water based paints
- Internal surfaces laminated with woodgrain patterned films
- Assortment of internal "Art-Wood" finishes
- 2" high density ridged foam insulation for the seat board with cPVC external finishing trim profile
- Optional Rod or cable supportive system





# ARCHITECTURAL SHAPES

Nothing adds drama like architectural shapes. Non-operating windows like these add light and style while maintaining energy efficiency.

**“DRAMATIC ACCENTS ADD ENDLESS STYLE...”**

**All Architectural Shapes include the following standard features:**

- 3-1/4" frame depth with mullion grooves
- High density internal wall design to increase thermal, structural and acoustical performances
- Excellent strength of fully welded joint connection of frame
- Interior glazing with double or triple glass insulated glass units
- Wide range of different shapes
- Custom sizes
- Connectivity with all 6300 Series windows

**All Architectural Shapes include the following options:**

- Solid white or tan colors
- Unlimited external color options painted with Eco-friendly water based paints
- Internal surfaces laminated with woodgrain patterned films
- Assortment of internal "Art-Wood" finishes
- Multiple Low-E and gas fill options
- Decorative internal or external grids
- Accessory profiles like: couplers, brick moldings & nail fin





# 6300 SYSTEM STANDARD FEATURES

- Lifetime Limited Warranty
- 100% virgin vinyl engineered to withstand the harshest weather conditions without any extra care
- Fusion welded sashes and frames
- The colonial style of the design offers an elegant appearance, enhances the luxurious feel and supplements the highest design trends
- Interconnectivity between all products
- Structural joint reinforcement system
- Double or triple glazing
- Solid white or tan colors
- Unlimited external color options painted with Eco-friendly water based paints
- Assortment of "Art-Wood" finishes or laminated with woodgrain patterned films
- Multiple Low-Es and gas fill options
- Decorative internal or external grid patterned films
- Accessory profiles like: couplers, brick mouldings and nail fin
- All products exceed the newest Energy Star requirements

## THERMAL PERFORMANCE SUMMARY

Description	Double-Glass w/argon fill w/o grids				Triple Glass w/argon & krypton fill w/o grids			
	Cardinal LE270 (2) + i59 (4)				Cardinal LE270 (2) + Clear + Cardinal LE270 (5)			
	U-Factor	SHOC	VT	CRF	U-Factor	SHOC	VT	CRF
6300 Double Hung A Window, All Sash rails w/reinforcement	0.24	0.28	0.52	49	0.20	0.24	0.41	70
6300 Double Hung B Window, meeting rails w/reinforcement	0.24	0.28	0.52	49	0.20	0.24	0.41	70
6300 Double Hung C Window, w/o reinforcement	0.24	0.28	0.52	49	0.20	0.24	0.41	70
6300 Picture Window	0.22	0.3	0.57	48	0.15	0.26	0.46	76
6300 Slider A Window, w/reinforcement	0.24	0.26	0.49	49	0.20	0.22	0.39	69
6300 Slider B Window, w/o reinforcement	0.24	0.26	0.49	49	0.20	0.22	0.39	69
6300 Casement A Window, w/reinforcement	0.23	0.24	0.44	49	0.17	0.20	0.35	76
6300 Casement B Window, w/o reinforcement	0.23	0.24	0.44	49	0.17	0.20	0.35	77
6300 Awning A Window, w/reinforcement	0.23	0.24	0.44	48	0.17	0.20	0.35	75
6300 Awning B Window, w/o reinforcement	0.23	0.24	0.44	48	0.17	0.20	0.35	76
6300 CS Picture Window Large	0.22	0.28	0.52	48	0.15	0.24	0.42	77
6300 CS Picture Window Small	0.22	0.31	0.59	48	0.16	0.27	0.47	74
6300 CS Slicing Patio Door	0.24	0.28	0.53	49	0.18	0.24	0.42	68
6300 Patio Door Side Panel/Transform	0.22	0.29	0.56	51	0.16	0.26	0.44	73

## STRUCTURAL PERFORMANCE SUMMARY

Description	Max dimensions		Class	Design Pressure (lb/ sq ft)	Air infiltration		Water Penetration (lb/ sq ft)
	Width (in)	Height (in)			Result (cfm/ sq ft)	Max allowed (cfm/ sq ft)	
	6300 Double Hung A Window, all sash rails w/reinforcement	44			75	LC-PG40	
6300 Double Hung B Window, meeting rails w/reinforcement	44	75	LC-PG40	40	0.1	0.30	7.52
6300 Double Hung C Window, w/o reinforcement	40	72	R-PG30	30	0.115	0.30	7.52
6300 Fixed Window	60	75	CW-PG70	70	0.003	0.30	10.65
6300 Slider A Window, meeting rails w/reinforcement	72	60	CW-PG30	30	0.057	0.30	7.52
6300 Slider B Window, w/o reinforcement	64	48	R-PG50	50	0.07	0.30	7.52
6300 Casement A Window, all sash rails w/reinforcement	36	72	CW-PG70	70	0	0.30	12.11
6300 Casement B Window, w/o reinforcement	32	60	LC-PG40	40	0.061	0.30	7.52
6300 Awning A Window, all sash rails w/o reinforcement	45	36	CW-PG50	50	0	0.30	7.52
6300 Awning B Window, w/o reinforcement	48	32	CW-PG35	35	0.006	0.30	6.05
6300 CS Fixed Window - Large	60	76	CW-PG70	70	0.013	0.30	10.65
6300 CS Fixed Window - Small	60	75	CW - PG70	70	0.000	0.30	10.65
6300 CS Slicing Patio Door	95.5	83	LC-PG40	40	0.091	0.30	7.52
6300 Patio Door Side Panel/Transform	54	83	CW-PG50	50	0.029	0.30	7.52







**ARDMOR**<sup>™</sup>  
WINDOWS & DOORS

1813 Easton Rd, Willow Grove, PA 19090  
Tel: (267) 314-7757, E-mail: [info@ardmor.com](mailto:info@ardmor.com)  
**WWW.ARD MOR.COM**



*Advanced Window Corp.*

4935 W. Le Moyne St. Chicago, IL 60651  
Tel: (773) 379-3500 Fax: (773) 379-4060  
E-mail: [aw@advancedwindow.com](mailto:aw@advancedwindow.com)  
[www.advancedwindow.com](http://www.advancedwindow.com)